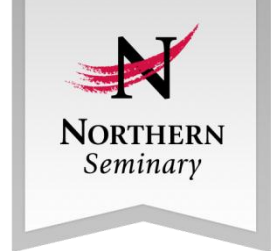


# Wifi Setup Instructions

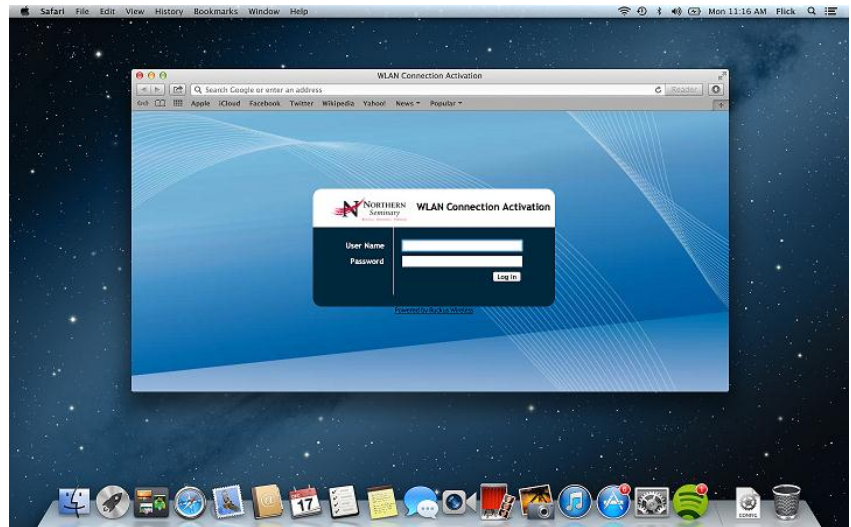
## Mac OS X



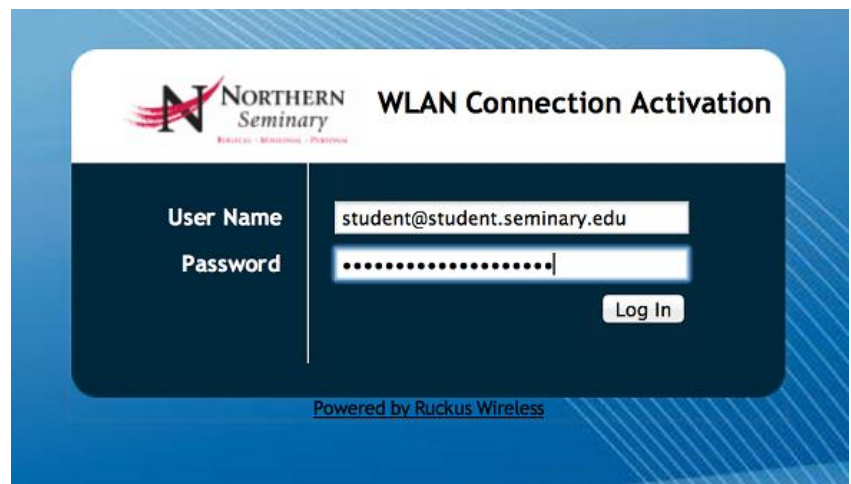
Navigate to the wifi status icon in your menu bar. Select “nssetup”.



Open up your internet browser. Your browser should automatically redirect you to the wireless activation website. **If it does not, simply type in any web address in the address bar. For example, apple.com.**



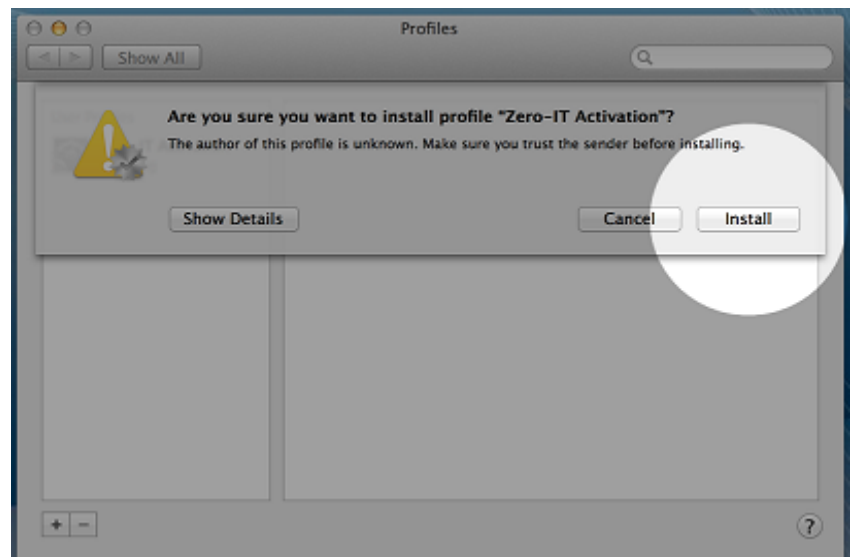
Type in your student credentials. For example, `student@student.seminary.edu`, and then enter in your password. Click on “Log In”



A window will open on the screen after a few seconds. Click on “Continue”. If a window does not open, please follow the instructions for manual setup.



Another window will open asking you to install a profile for “Zero-IT Activation”. Click on “Install”



Close the open window.

Navigate back to your wifi settings to check if you are connected. If you are not, simply click on the network you have been setup for.

Students: nsstudentwifi  
Staff and Faculty: nsemployeeewifi

